

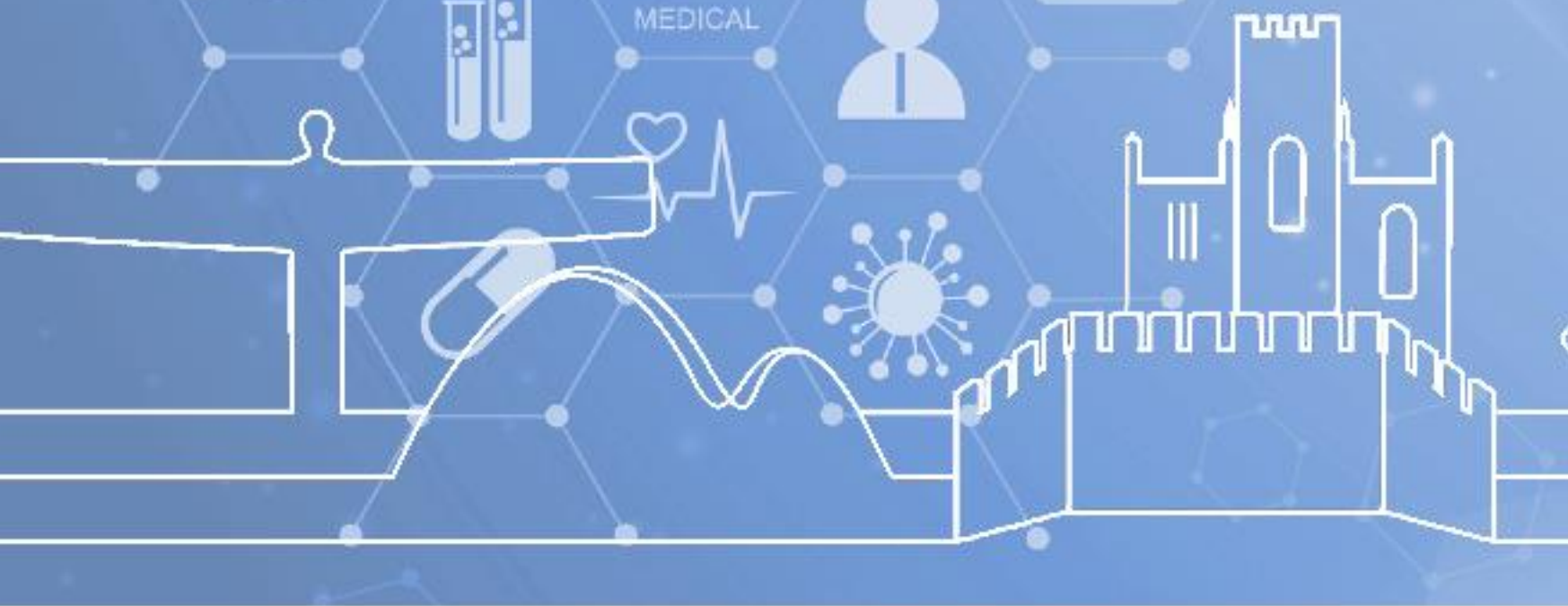


North East & North Cumbria ICS
Digital Care Programme

Axym and the Trusted Research Evaluation Environment (TREE)

I-Lin Hall, NECS
Head of Data and Digital Applications

Mark Walsh, AHSN-NENC
Portfolio Manager



North East and North Cumbria ICS

3.2M Patients



**8 Acute
Trusts**



**1 ICS
4 ICPs**



**13 Local
Authorities**



**TEWV and CNTW
2 Mental Health
Trusts**



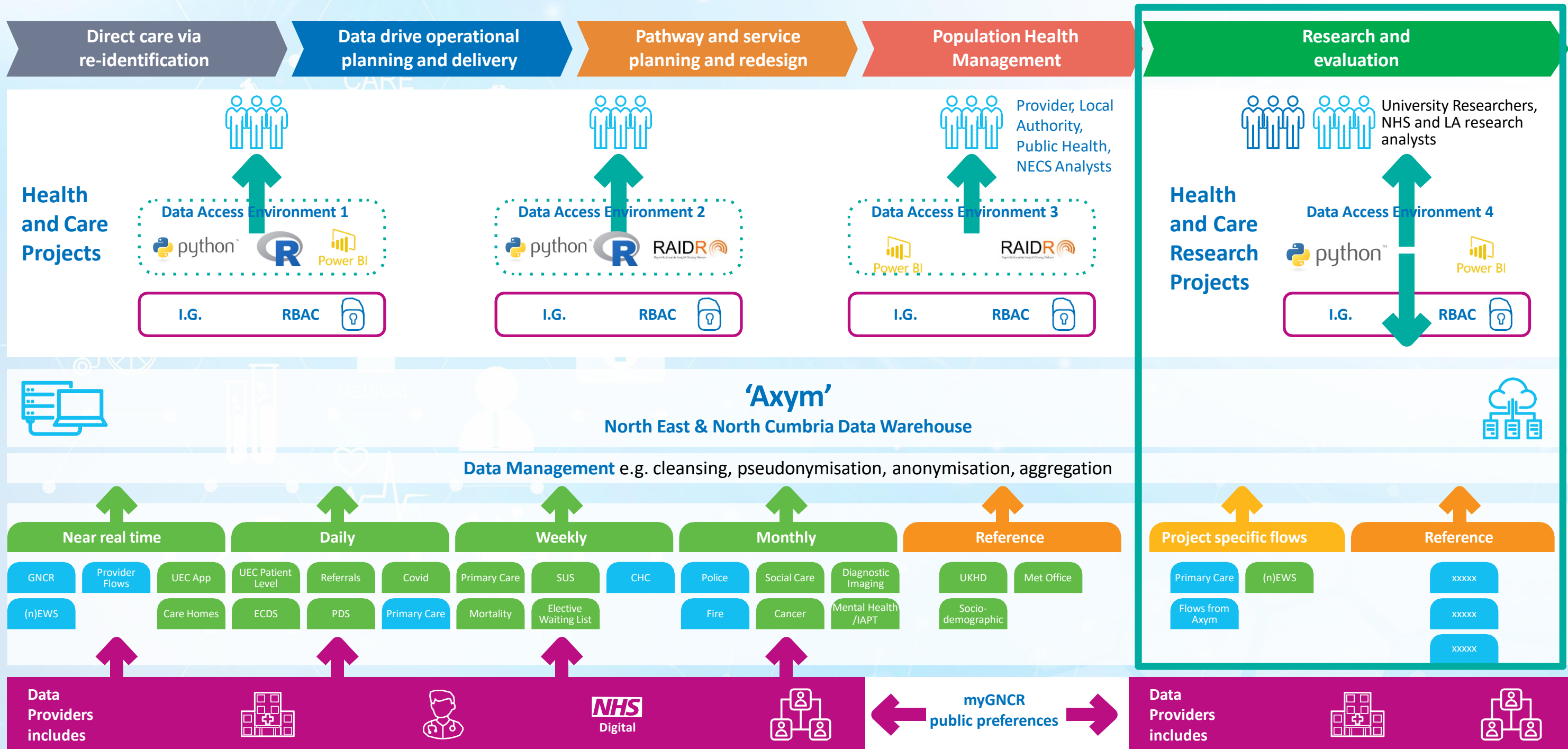
**1 Ambulance
Trust**



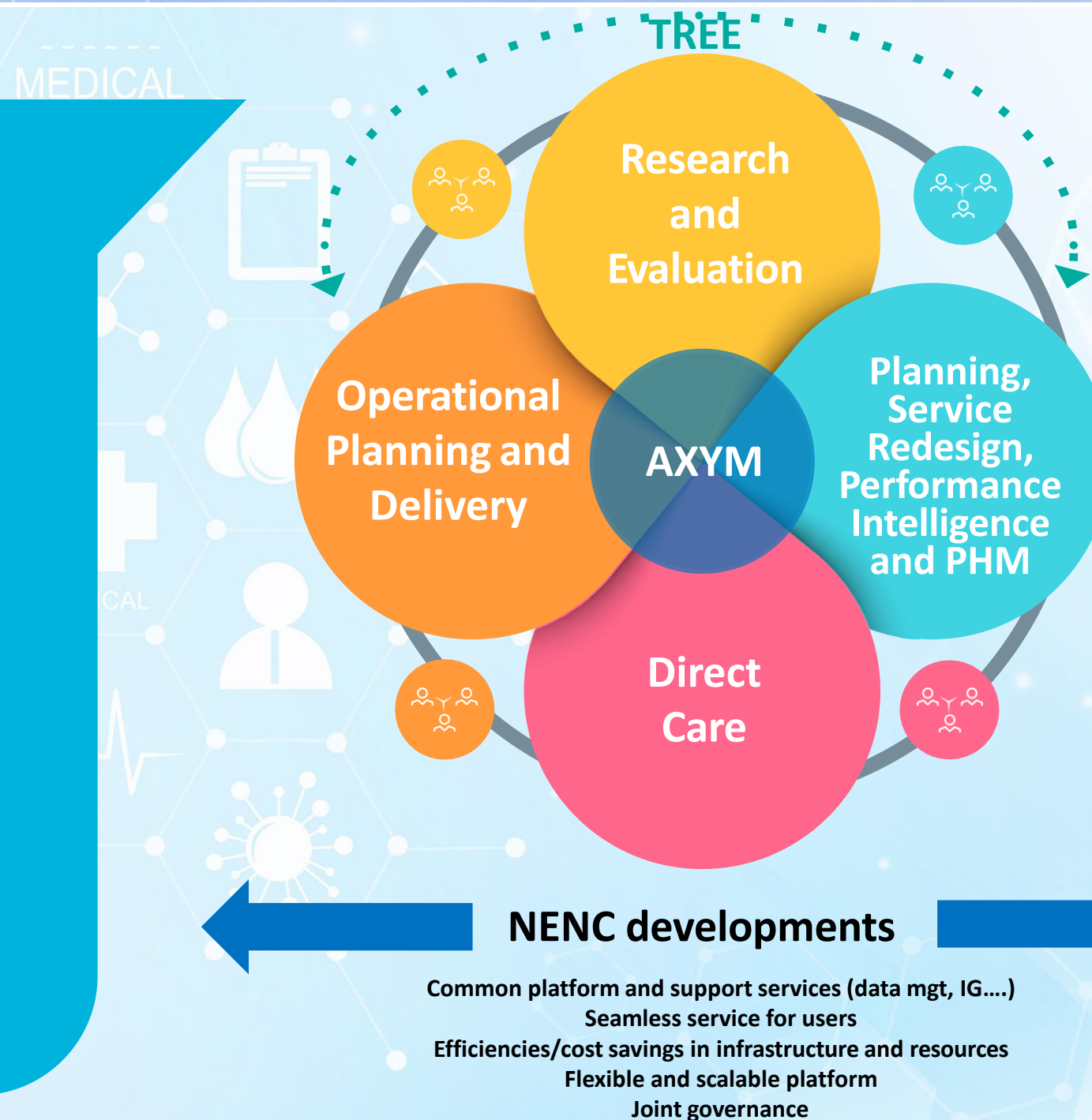
**4 Out of Hours
Providers**



Overview of Data Environment



Axym Benefits and Opportunity



All organisations have access to the same data providing one source of the truth, professionally managed, robustly secured, supporting system / place / neighbourhood working.

Integrated patient level data covering health, care and wider determinants of health.

Underpins PHM, commissioning, planning, reform, and informs care coordination.

Can underpin shared analytics working across organisations.

Removes debate, waste, inefficiencies and duplication of resource working on data and contract management, allowing more focus on value adding activities.

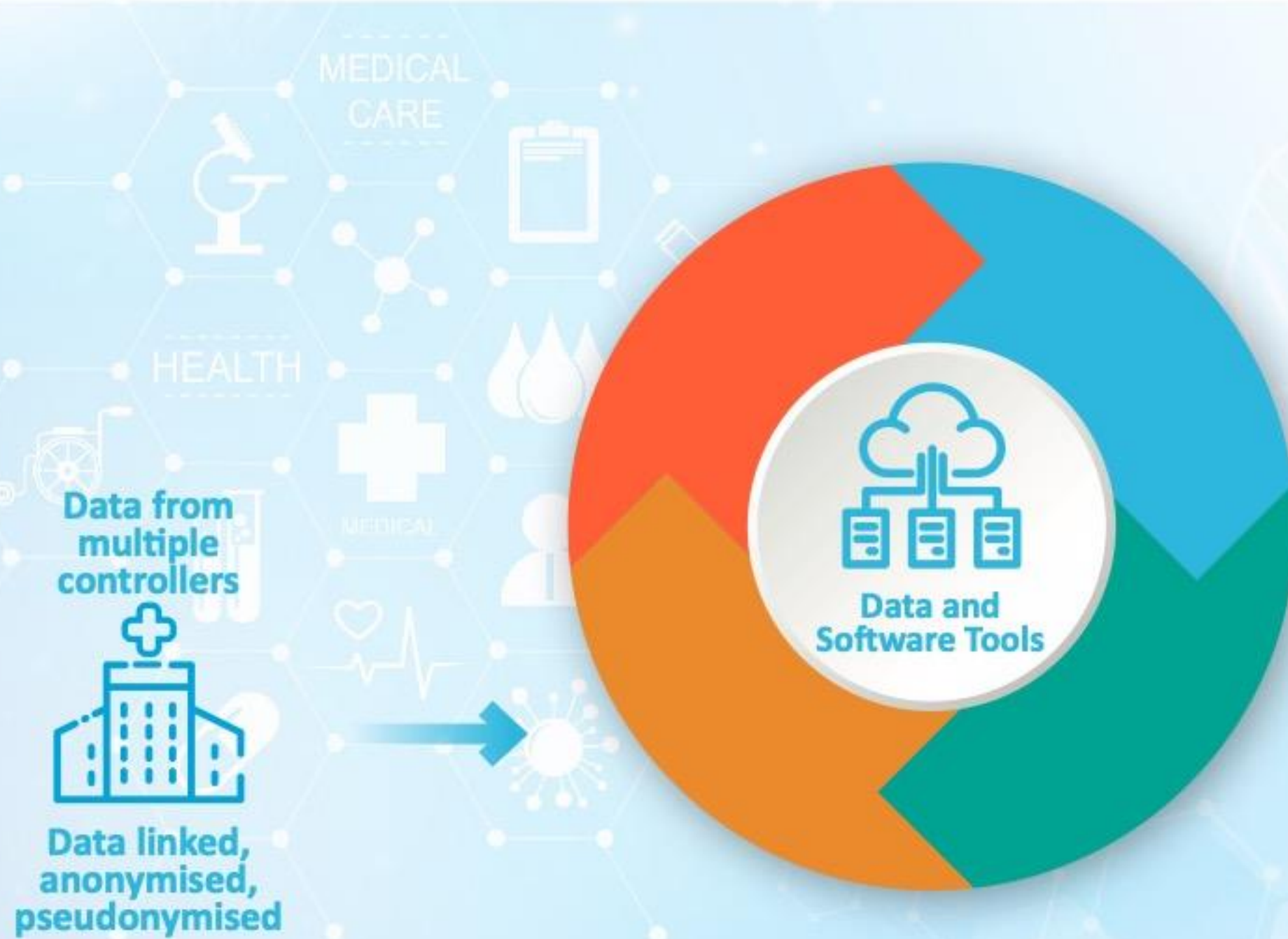
What does the TREE Provide?



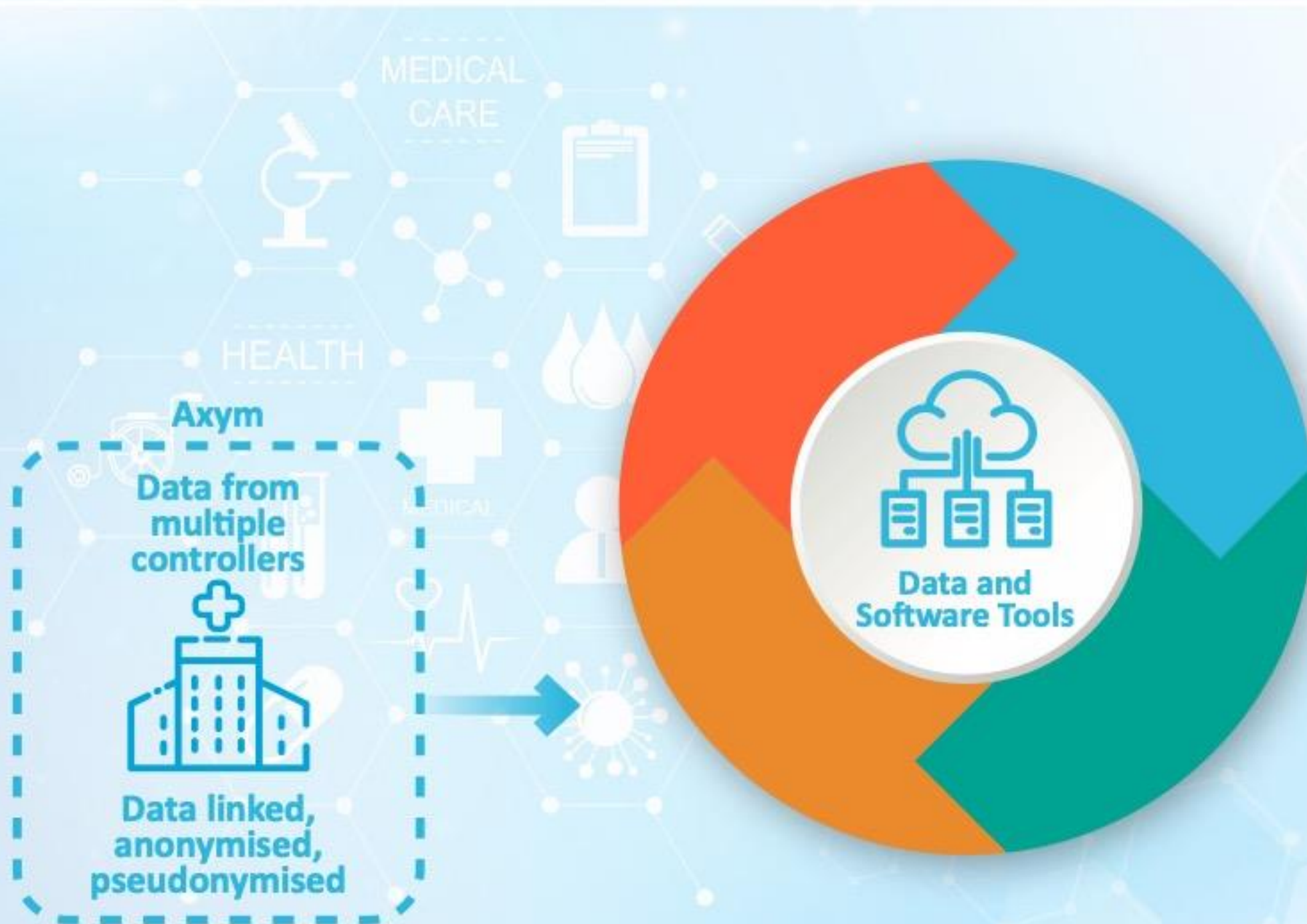
What does the TREE Provide?



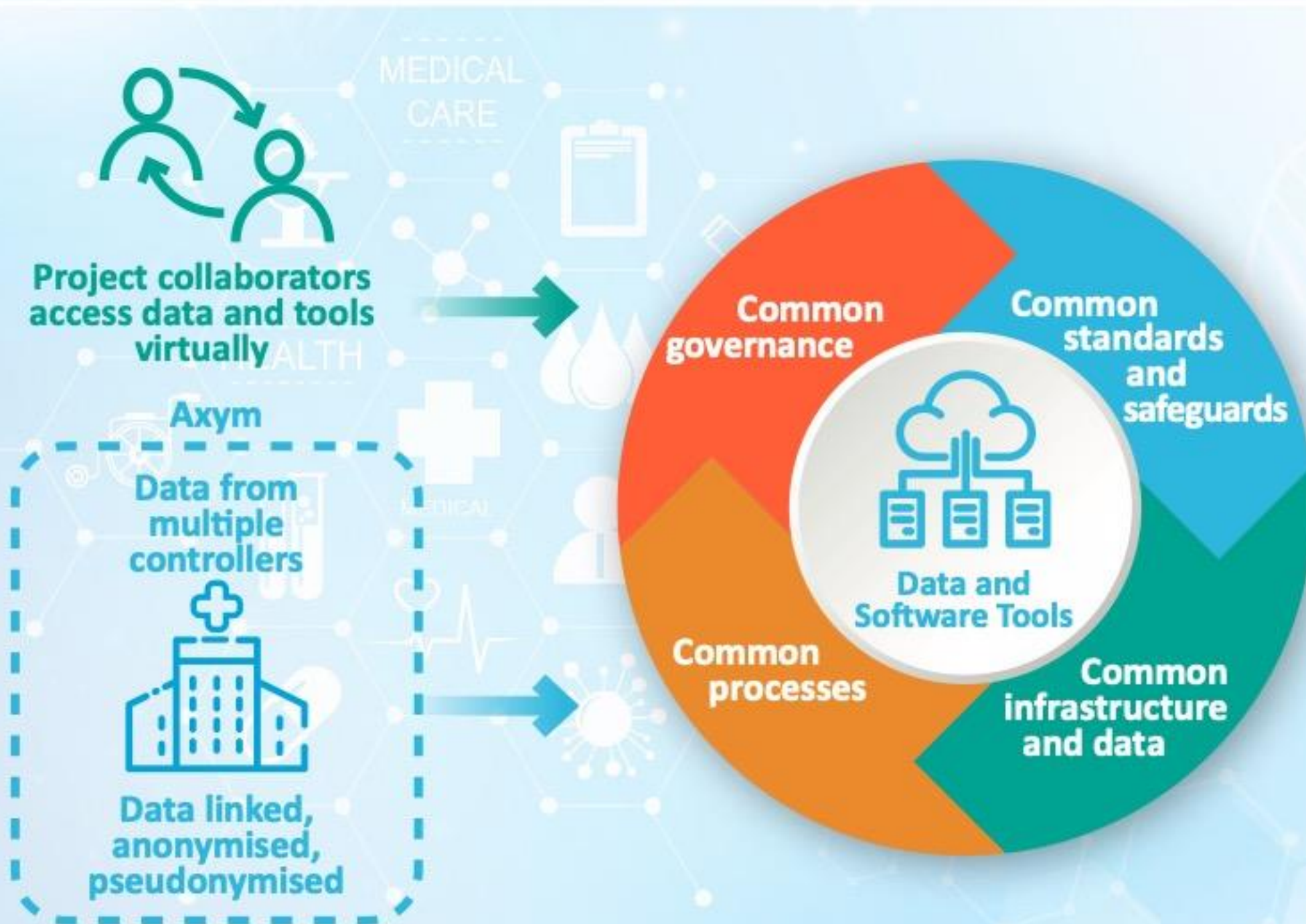
What does the TREE Provide?



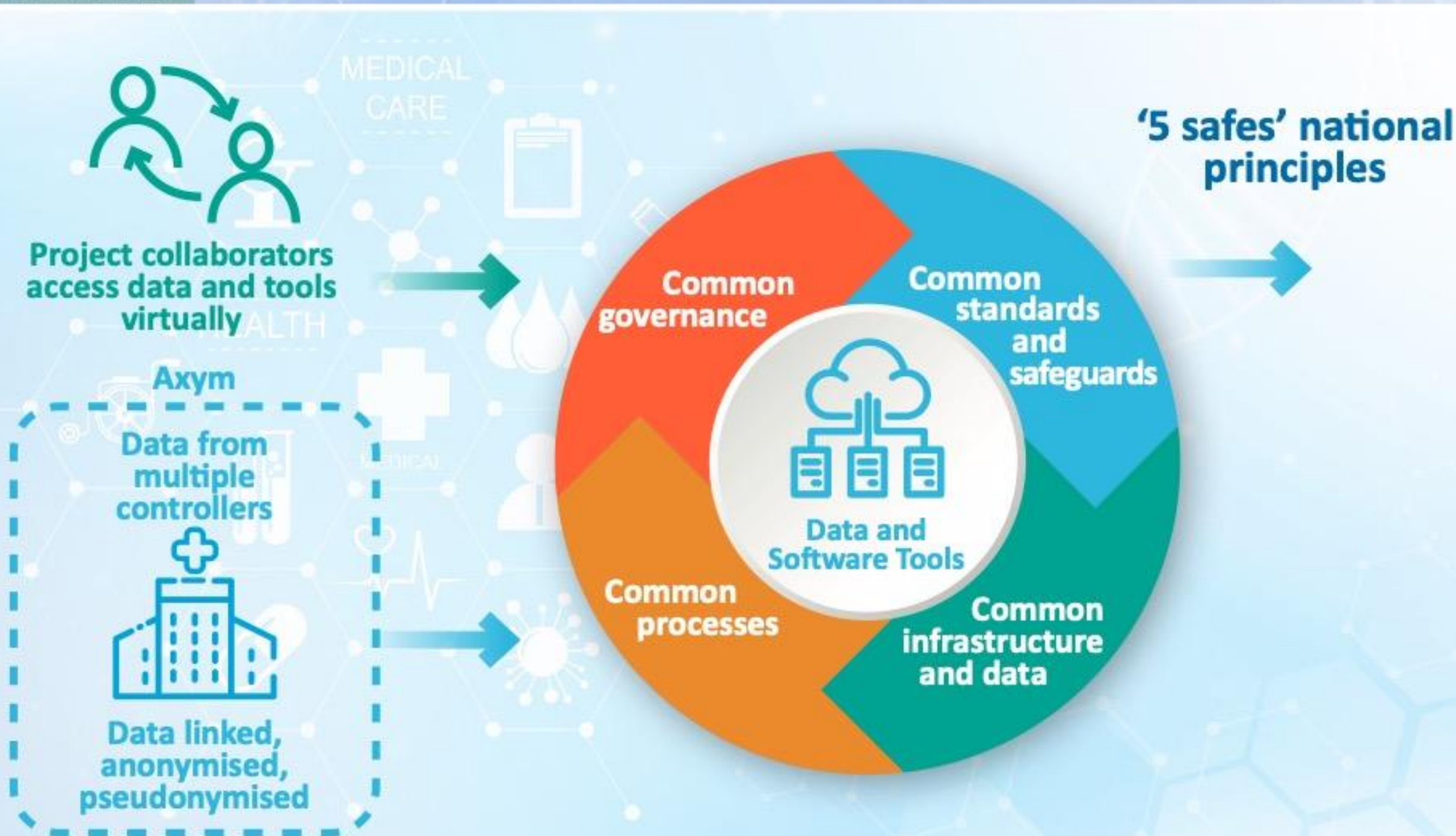
What does the TREE Provide?



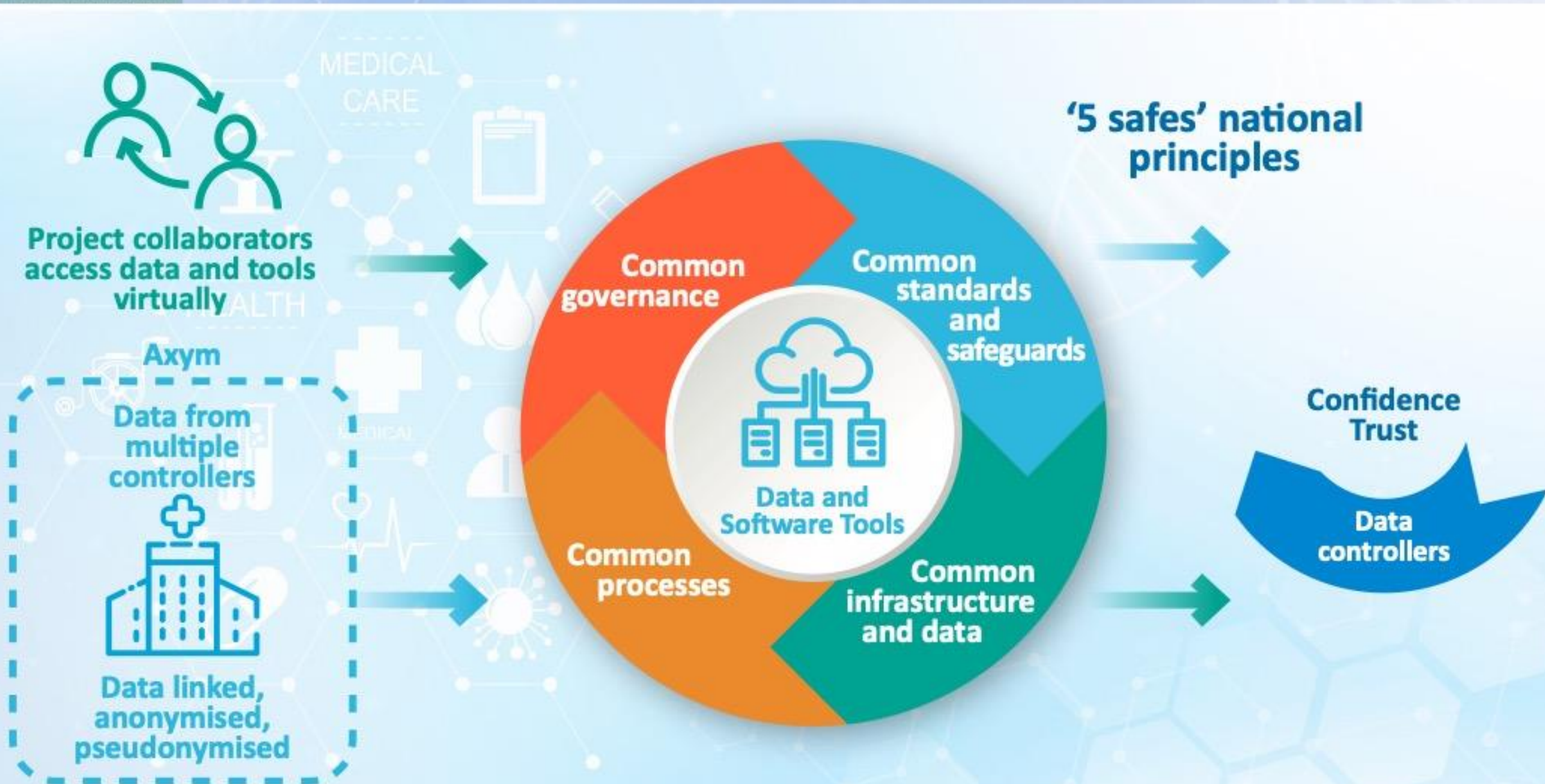
What does the TREE Provide?



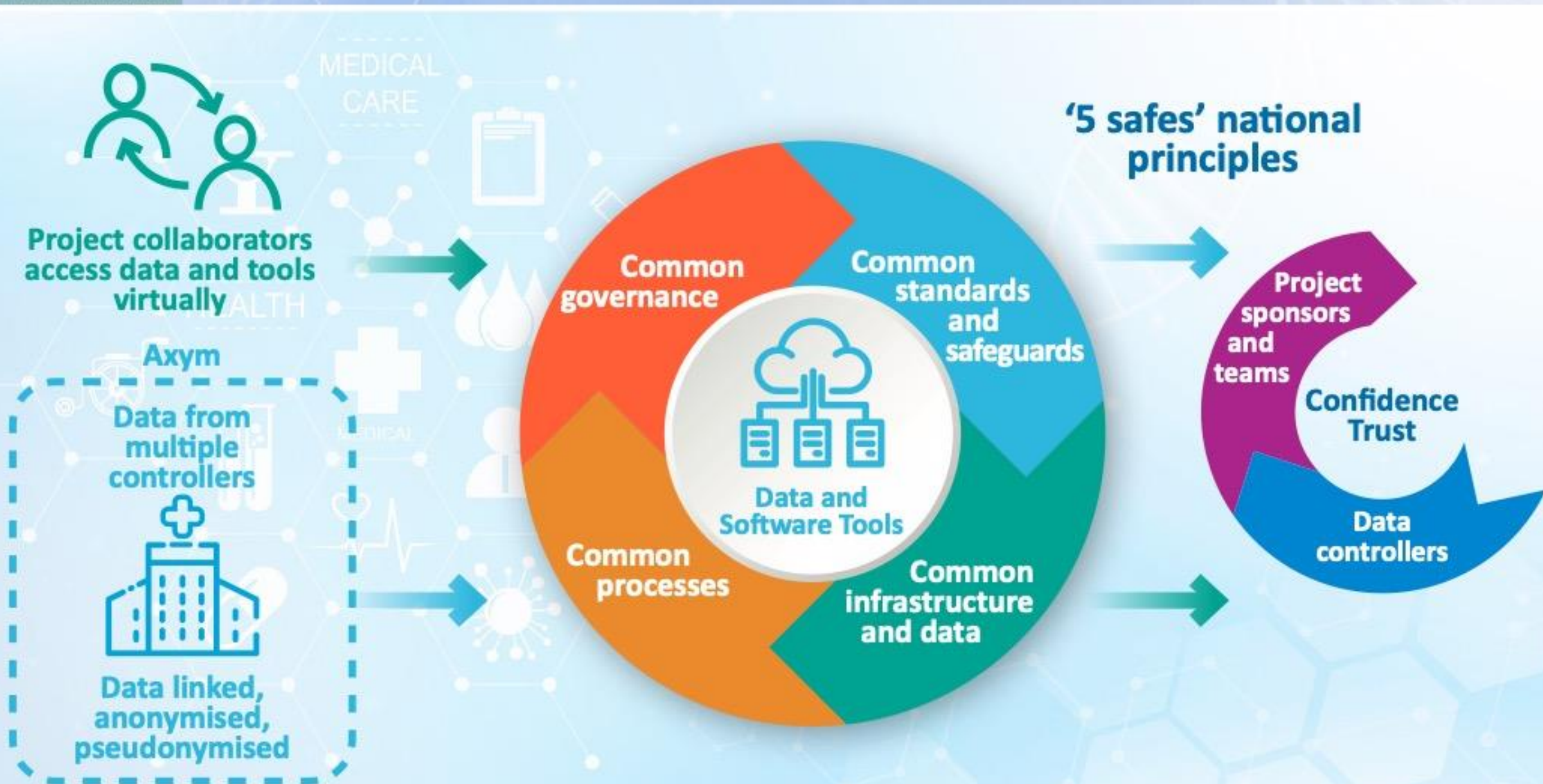
What does the TREE Provide?



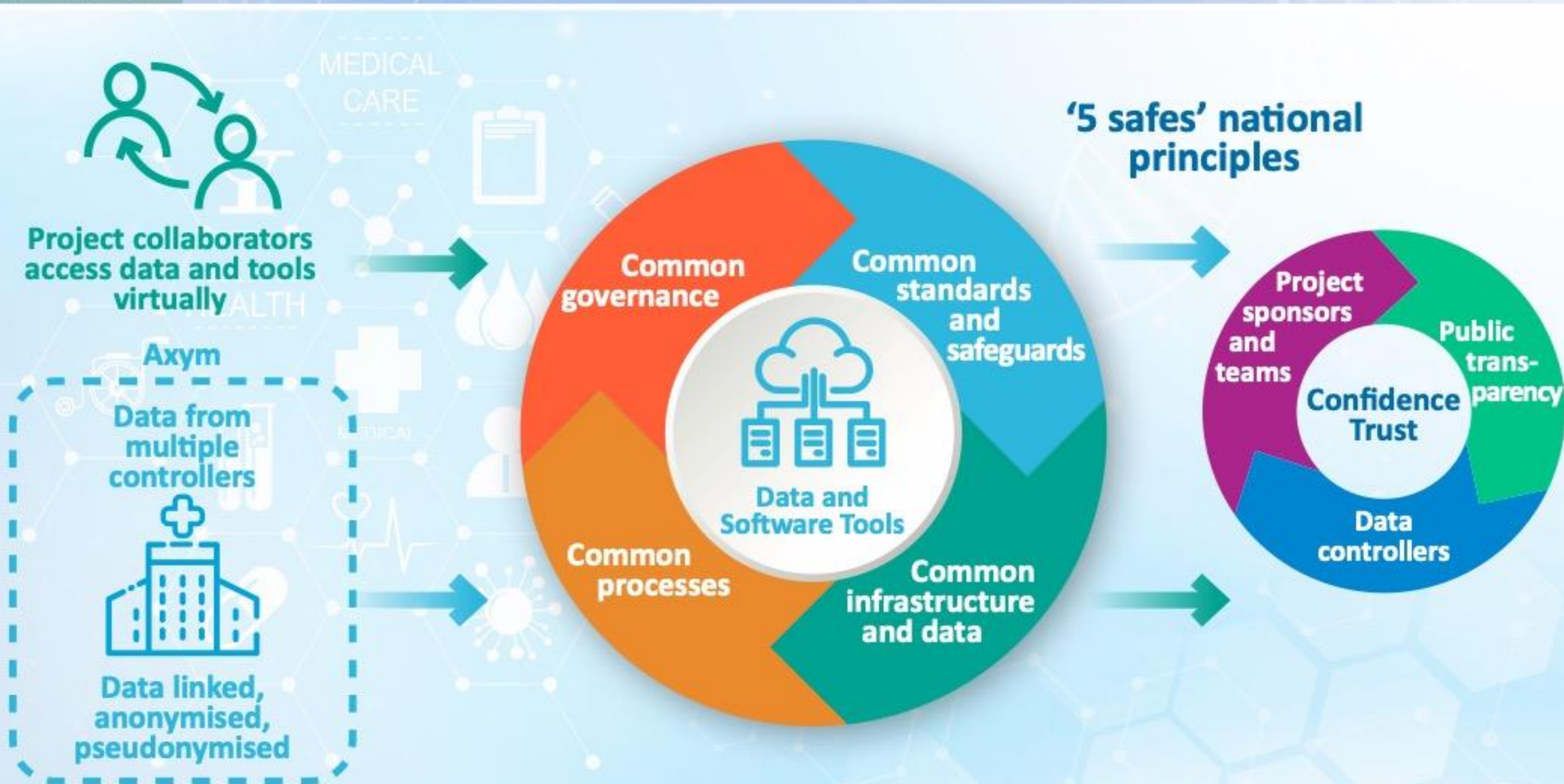
What does the TREE Provide?



What does the TREE Provide?



What does the TREE Provide?



Axym and TREE Benefits and Opportunity

Axym

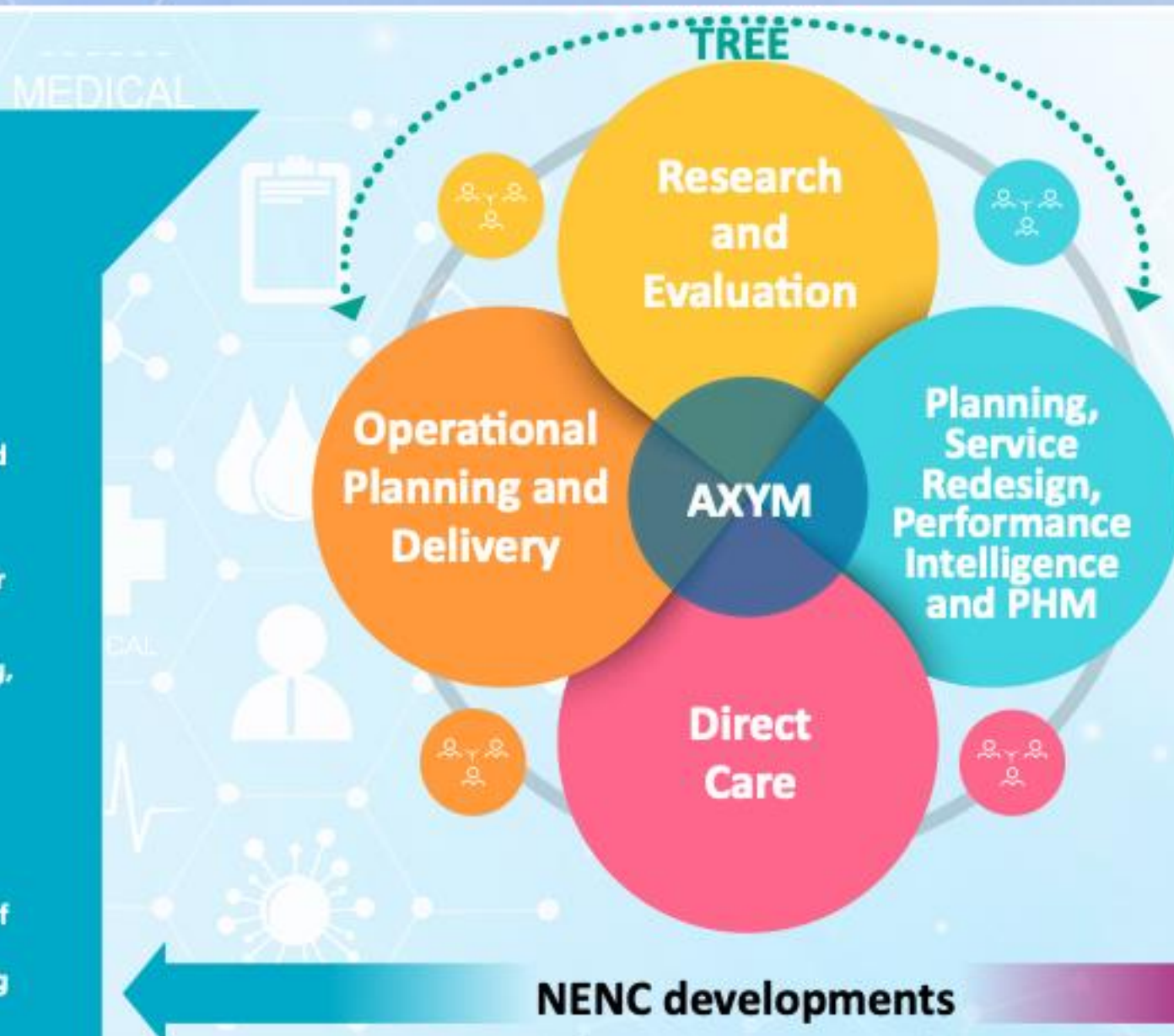
All organisations have access to the same data providing one source of the truth, professionally managed, robustly secured, supporting system / place / neighbourhood working.

Integrated patient level data covering health, care and wider determinants of health.

Underpins PHM, commissioning, planning, reform, and informs care coordination.

Can underpin shared analytics working across organisations.

Removes debate, waste, inefficiencies and duplication of resource working on data and contract management, allowing more focus on value adding activities.



TREE

Unlock the value of our data by bringing together the expertise and knowledge of our regional academic and health and care communities, in partnership with our citizens, to improve and sustain better health and well-being outcomes in our region.

Enable joint collaborations to focus on local healthcare priorities and opportunities for service improvements, innovative treatments and evaluation.

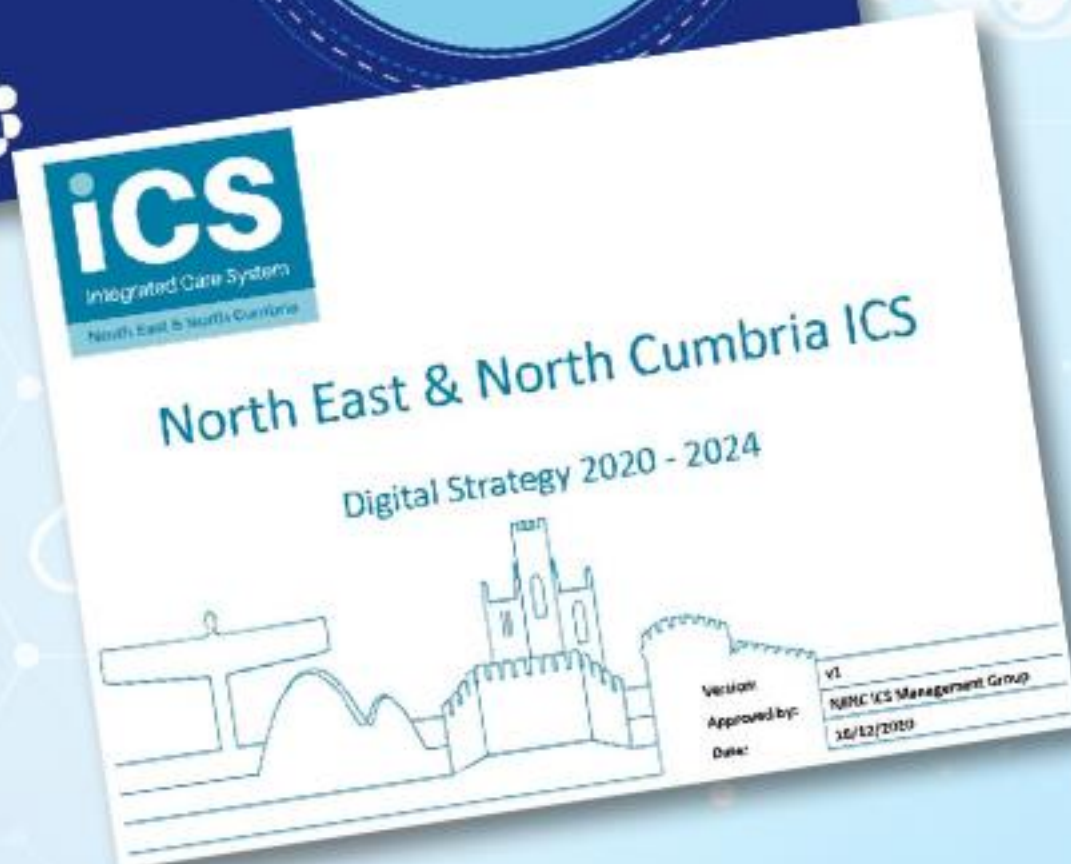
Have a nationally recognised TREE of choice for future industry collaborations, generating funding for regional healthcare improvements.

Provide an environment recognised by all our stakeholders as inclusive, accessible, safe, secure, ethical and well governed.

NENC developments

Common platform and support services (data mgt, IG....)
Seamless service for users
Efficiencies/cost savings in infrastructure and resources
Flexible and scalable platform
Joint governance

NENC Regional and National Context



the ICS NHS body will facilitate partners in the health and care system to work together, combining their expertise and resources to deliver improvements, fostering and deploying research and innovations”

To provide reassurance to the public... we are also looking to the development of new technological advances in how data is collected, stored and analysed.....The system will look increasingly to trusted research environments (TREs)

the system will look increasingly to trusted research environments (TREs)...the ambition is to ensure the UK has the most advanced and data-enabled clinical research environment in the world



Thank you for your time

Questions

mark.walsh@ahsn-nenc.org.uk
i-lin.hall@nhs.net