

Beating cancer using an openEHR platform approach

Phil Bottomley

Digital Strategic Lead, The Christie NHS FT



@philbotto



philbottomley



Agenda

Introduction

System Landscape

What is openEHR?

Current Programme

Where Next?



My Background

Digital Health Consultant

– Answer Digital

Senior Software Engineer

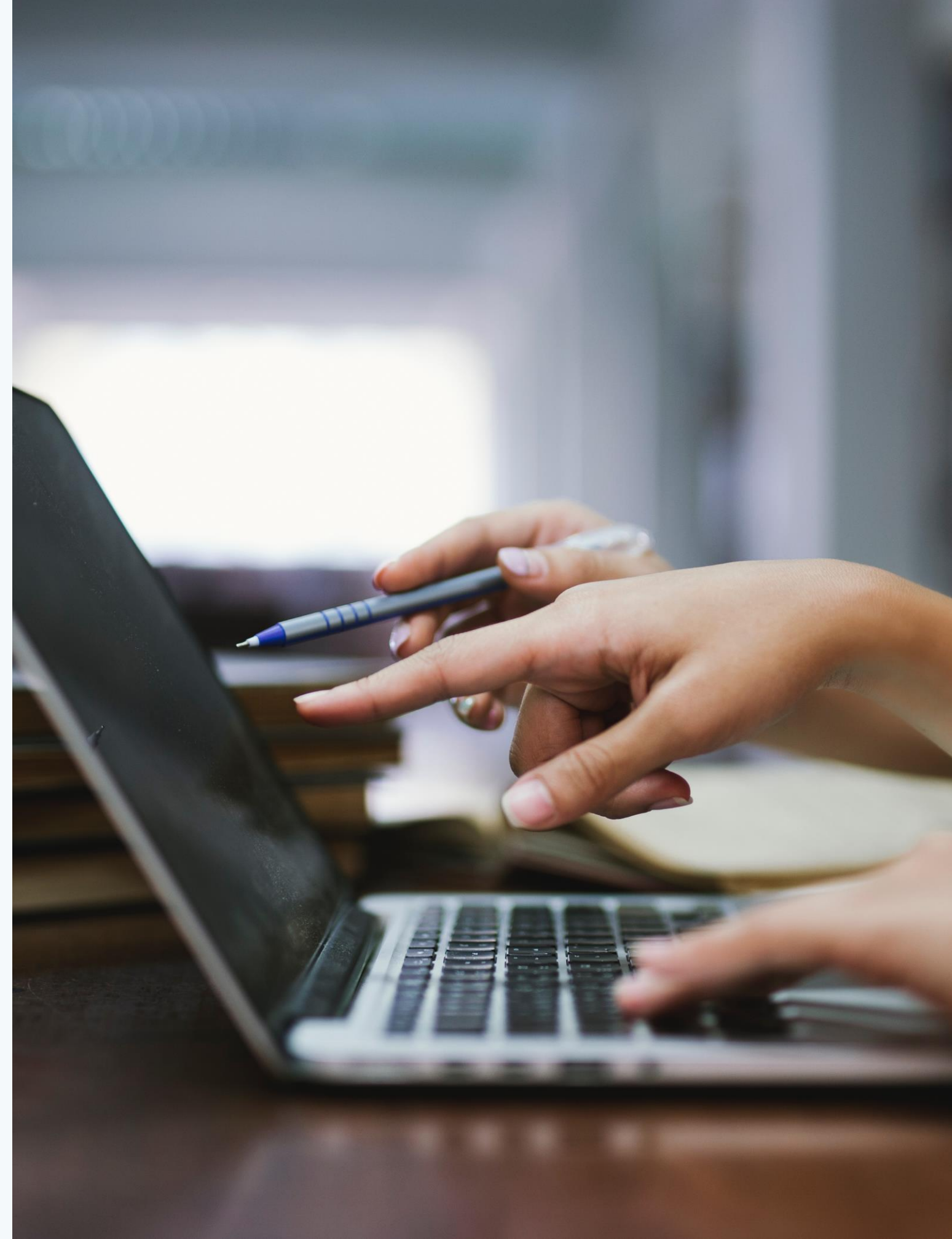
– Leeds Teaching Hospitals NHS FT

Technical Architect

– Manchester University NHS FT

Independent Strategic Lead

– The Christie NHS FT



The Christie NHS FT

Largest single site cancer centre in Europe

Treat 60,000 patients each year

Run 11 additional satellite sites across Greater Manchester and Cheshire

25% of patients are referred from 'out of area' across the UK



The Christie NHS FT

1 of only 2 Trusts in the UK that provide proton beam therapy

Over 650 clinical research studies and trials running at any given time

Building a new 9 storey world-class research facility



Agenda

Introduction

System Landscape

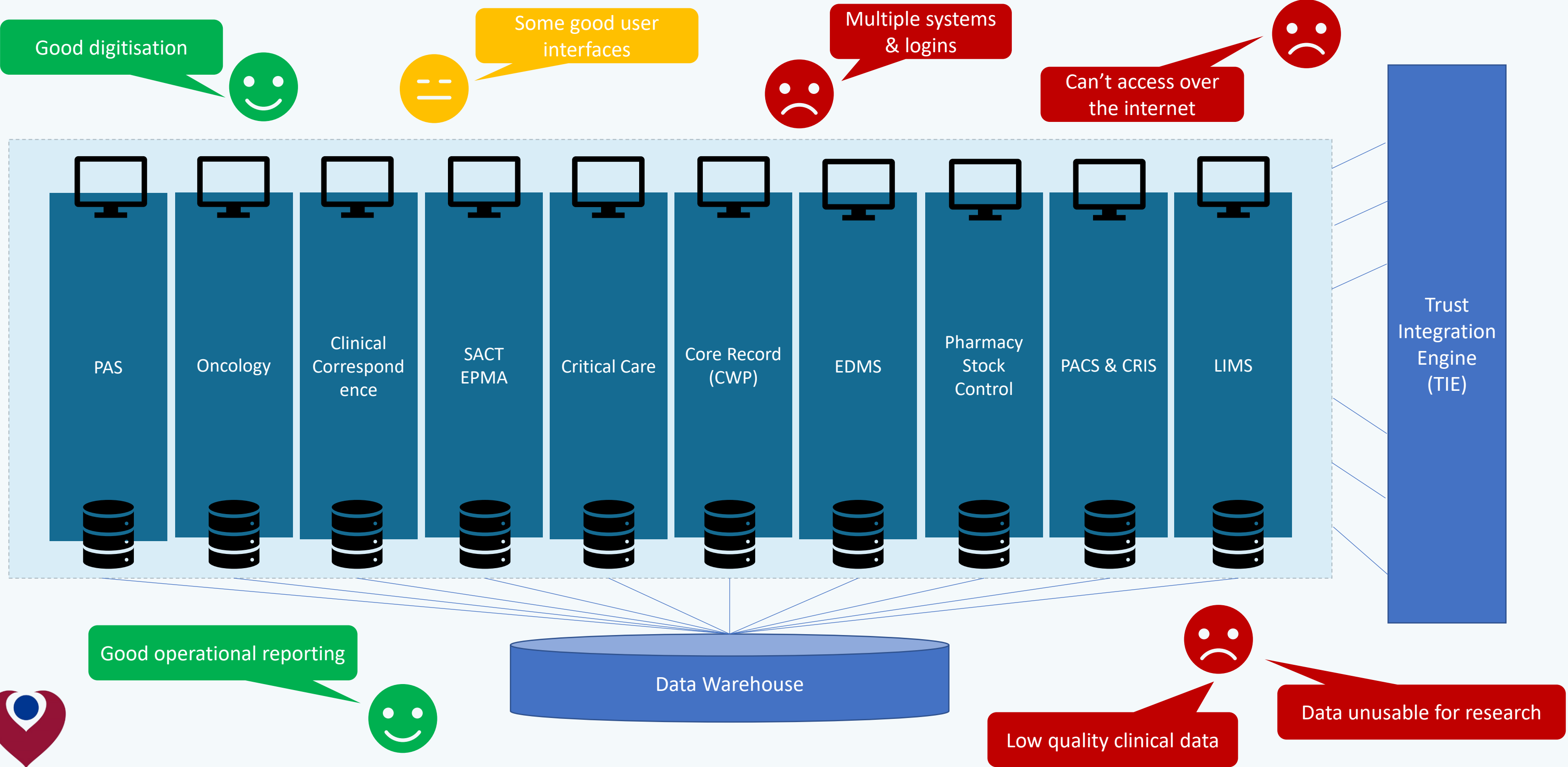
What is openEHR?

Current Programme

Where Next?



System Landscape – Siloed Best of Breed



Agenda

Introduction

System Landscape

What is openEHR?

Current Programme

Where Next?



What is openEHR?

Open storage standard

Defines how data models are structured and persisted

Enables separation of the data layer from the application layer

Vendor neutral and database neutral



Agenda

Introduction

System Landscape

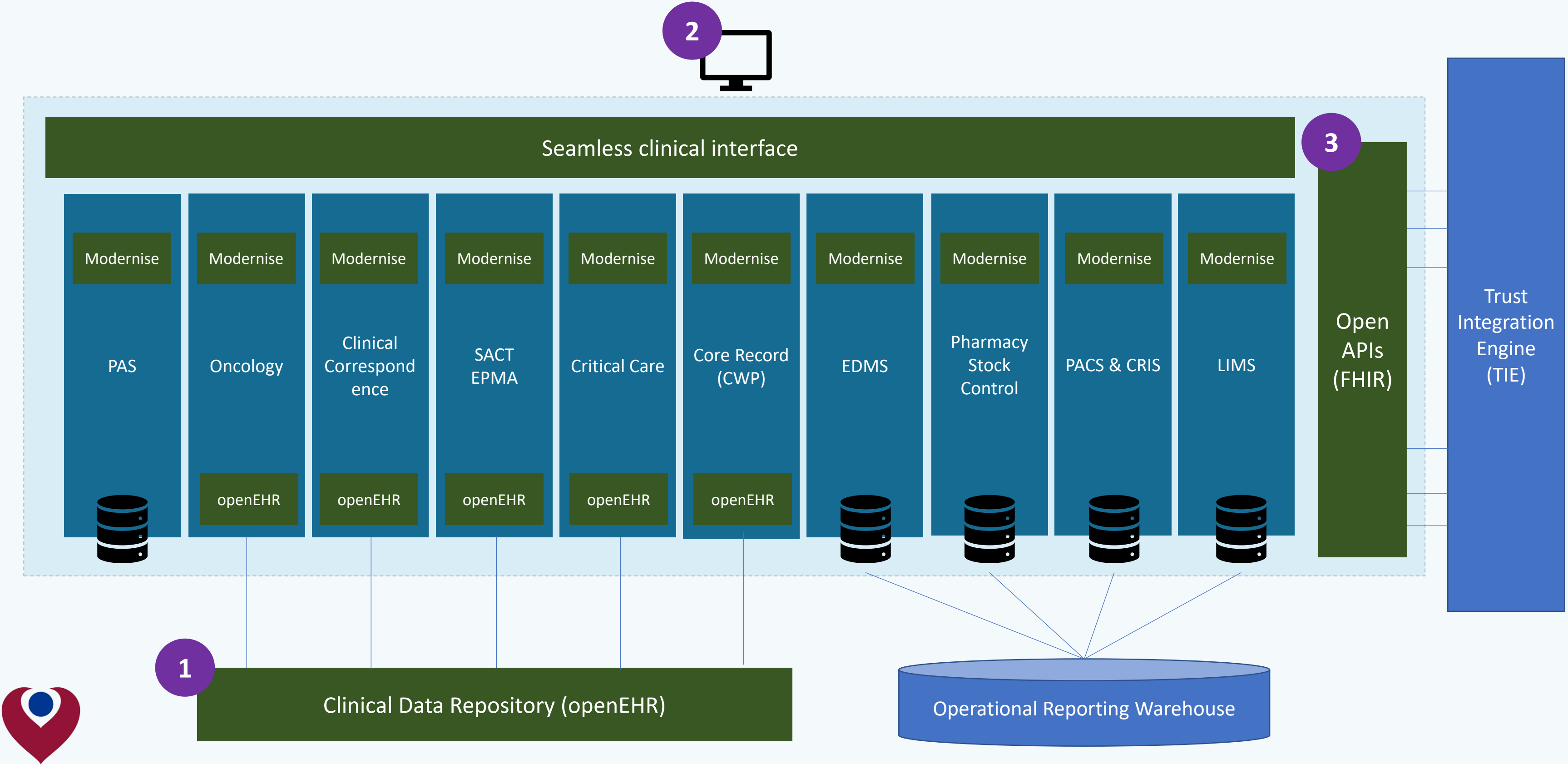
What is openEHR?

Current Programme

Where Next?



Strategy – EHR platform using openEHR



EHR programme – next 12 months

1. Prepare

Authentication, Navigation,
UI Improvements



openEHR platform & low-
code procurement



2. Deliver the Basics

*open*EHR  **better
platform**



PROMS portal

Order comms (expand trust wide)



3. Redefine

*open*EHR  **better
platform**

Clinical forms & pathway redesign

eMeds (expand trust wide)



Agenda

Introduction
System Landscape
What is openEHR?
Current Programme
Where Next?

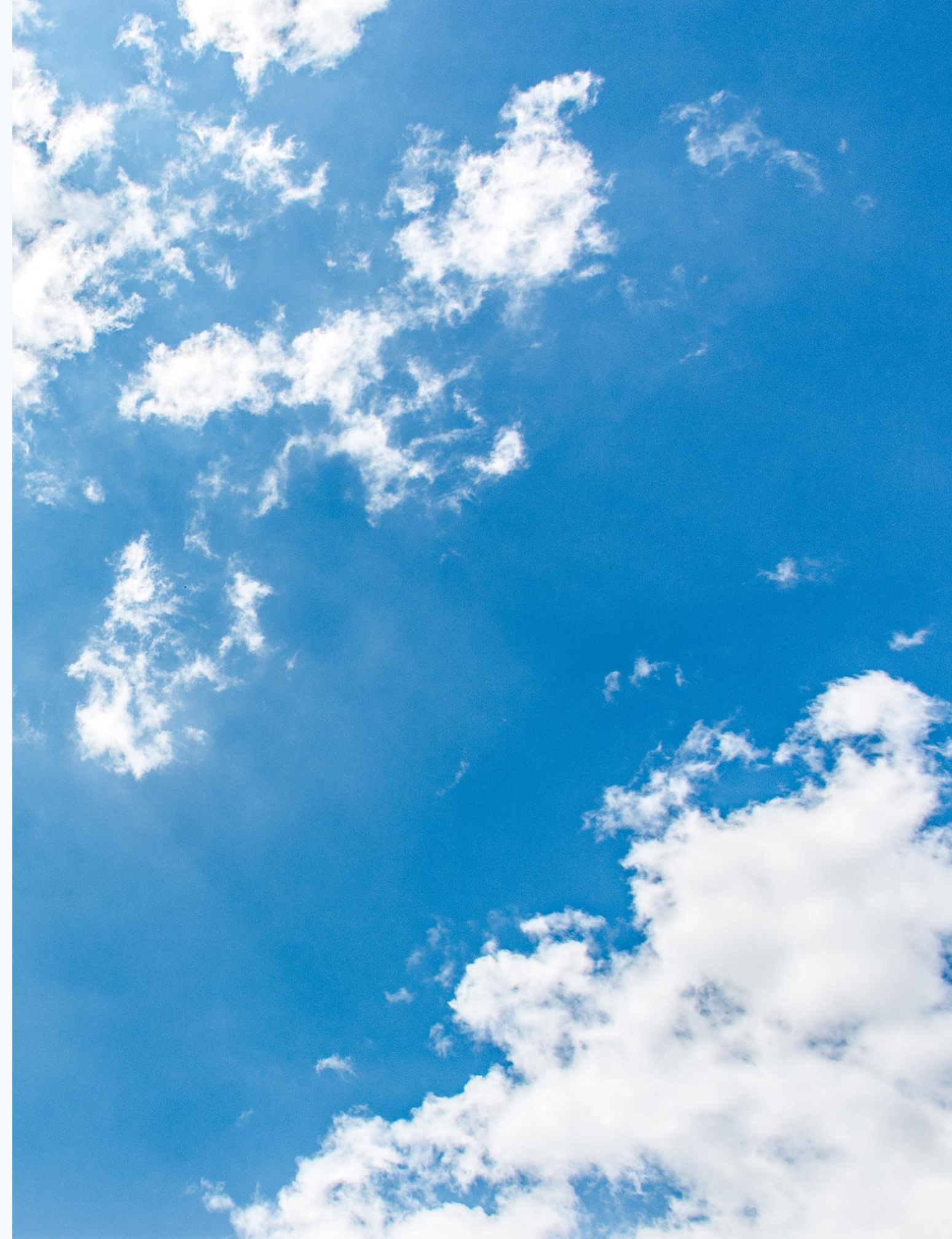


Where Next – The Christie

Plan programme expansion using NHS-E
Frontline Digitisation funds

Incentivise and influence suppliers to
transition to openEHR data layers

Trusted Research Environment (TRE)
strategy development



Questions



@philbotto



philbottomley

